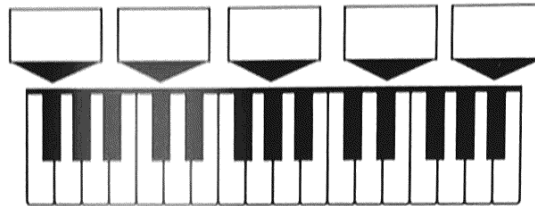
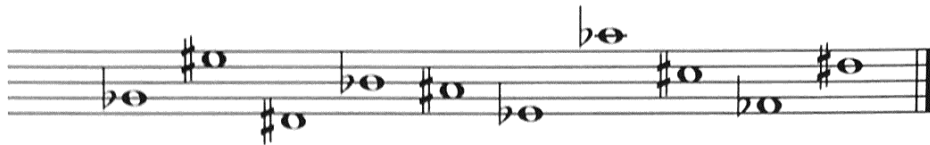


**1** Write the two enharmonic names (for example, F#/G♭) of the indicated piano keys in each of the boxes.



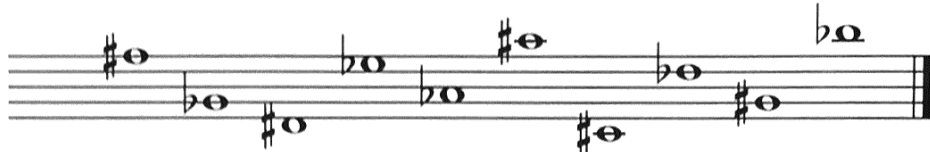
2-10

**2** Draw the bass clef and name the notes.



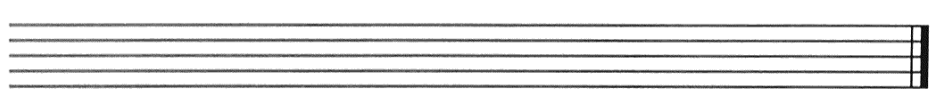
1-10

**3** Draw the treble clef and name the notes.



1-10

**4** Draw a treble clef and notes as indicated below the staff using half notes. Use correct stem direction.



1-10

E♭ C# D♭ F# A♭ B# G♭ D# F♭ A#

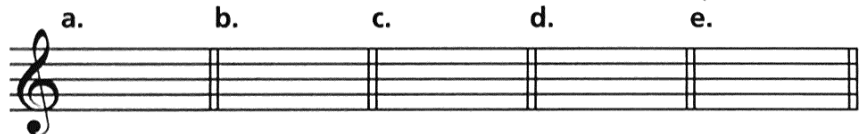
**5** Write the names of the notes.



1-20

**6** Draw two enharmonic notes on the staff as indicated, and name the notes in the spaces below them.

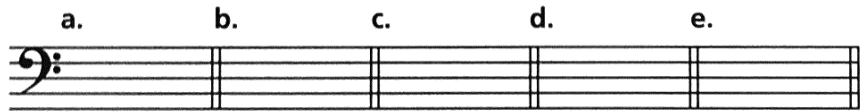
- a. one half step above F
- b. one half step below D
- c. one half step above B
- d. one half step below G
- e. one half step above A



1-10

**7** Draw two enharmonic notes on the staff as indicated, and name the notes in the spaces below them.

- a. one whole step above E
- b. one whole step below C
- c. one whole step above B
- d. one whole step below F
- e. one whole step above C♭



1-10

**8** The enharmonic note for E# is \_\_\_\_\_. The enharmonic note for F♭ is \_\_\_\_\_.

1-2

**9** Name the notes and indicate whether the distance between each pair is a whole step (W) or half step (H).



1-18

100