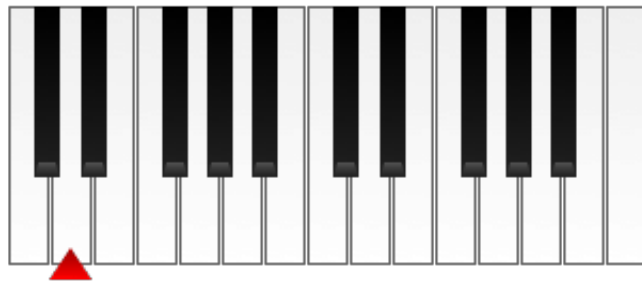


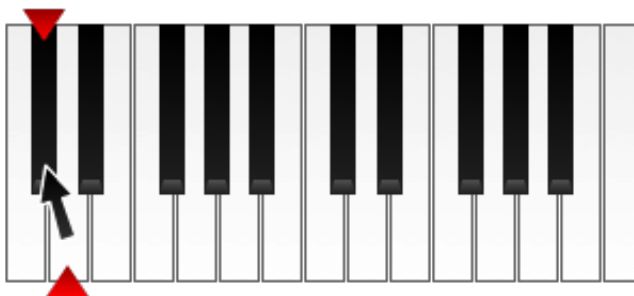
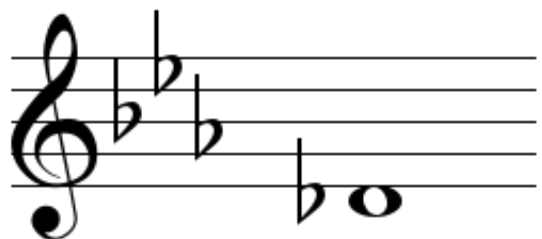
Building Neapolitan Chords

printed from www.musictheory.net

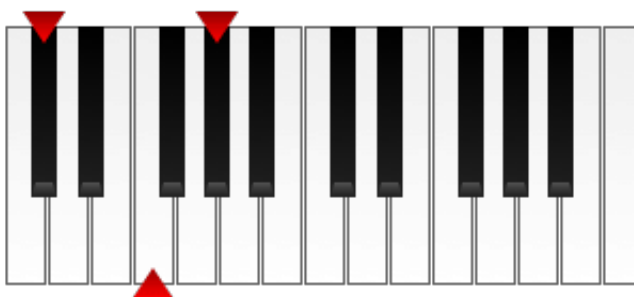
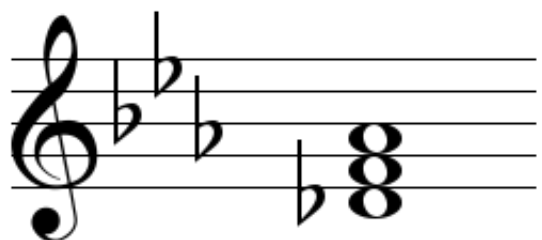
-
- A **Neapolitan chord** is simply a major triad that is built on a special note.
 - This note is the lowered second degree (the supertonic) of a major or minor scale.
-
- Let's build the Neapolitan of C Minor.
 - First, figure out the second scale degree. In C Minor, this is D.



- Next, we will lower it to $D\flat$.

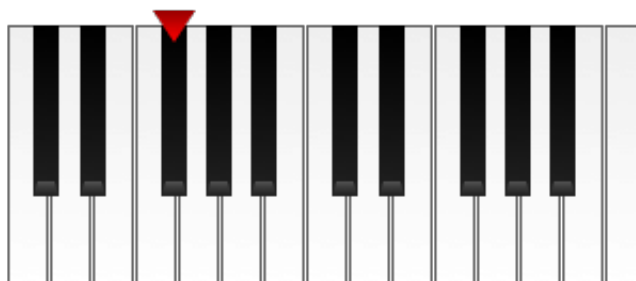
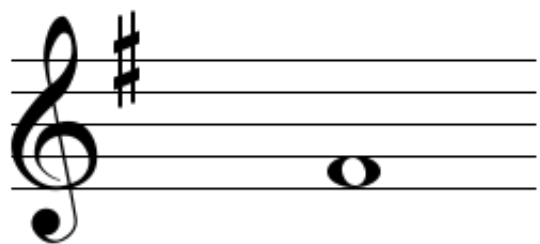


-
- Now build a major triad. This results in $D\flat-F-A\flat$.

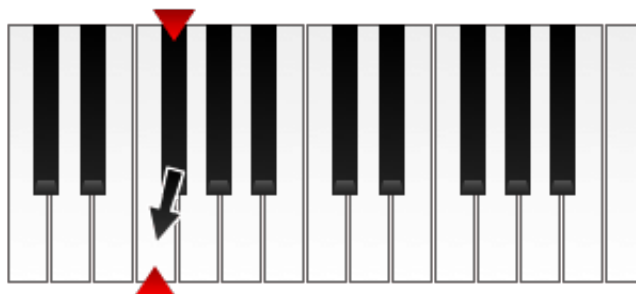


- A $D\flat$ major chord is the Neapolitan of C Minor.

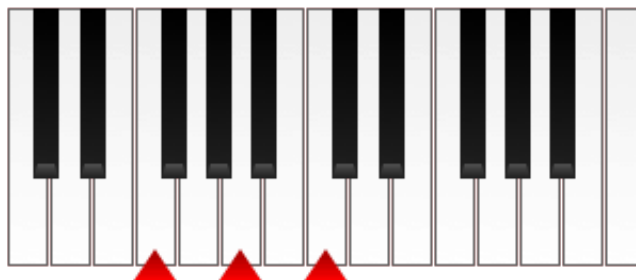
- Next, let's build the Neapolitan of E Minor.
- Again, we need to figure out the second scale degree. In E Minor, this is F#.



-
- Lower it to F natural.

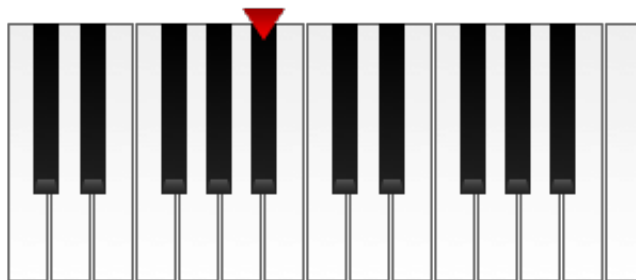


- Now, build a major triad. This results in F–A–C.

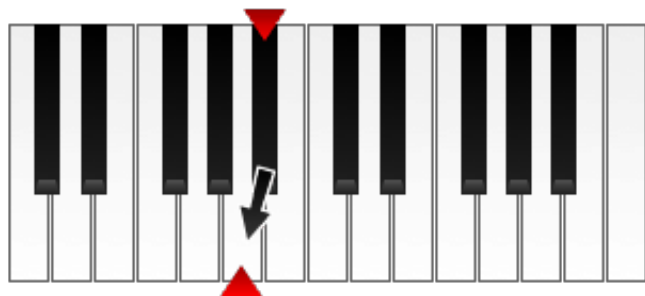


- Thus, an F major chord is the Neapolitan of E Minor.

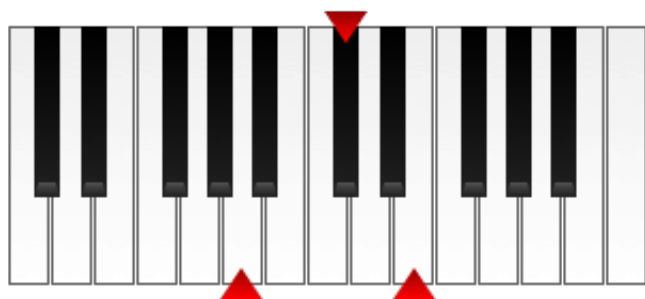
-
- Next, let's build the Neapolitan of A \flat Major.
 - In this key, the second scale degree is B \flat .



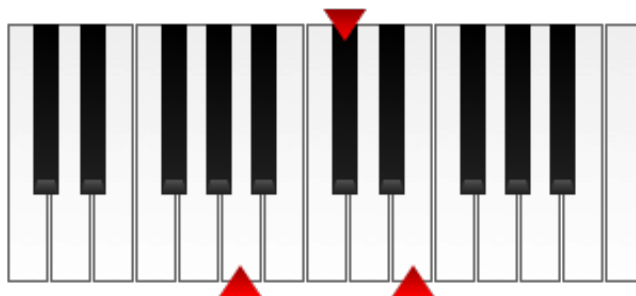
- Lower it to B $\flat\flat$.



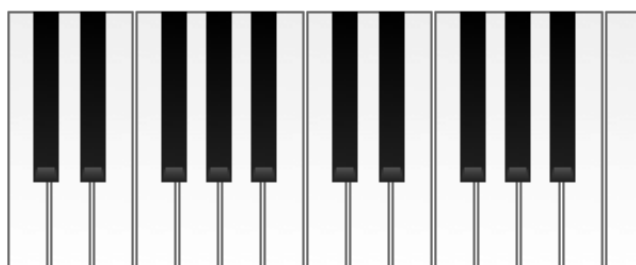
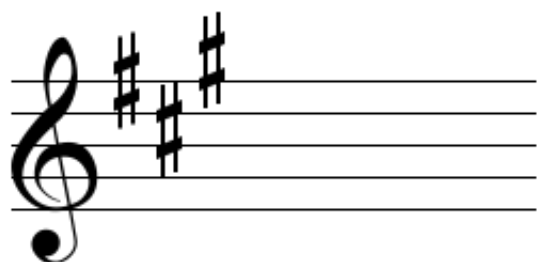
-
- Now, build a major triad. This results in B $\flat\flat$ -D \flat -F \flat .



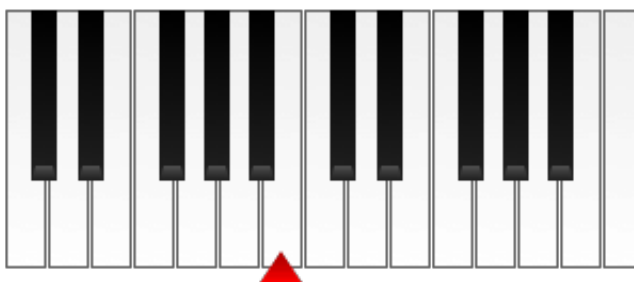
- Thus, a B $\flat\flat$ major chord is the Neapolitan of A \flat Major.



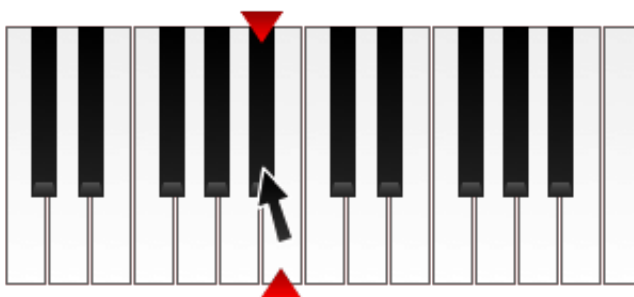
-
- For our final example, let's build the Neapolitan of A Major.



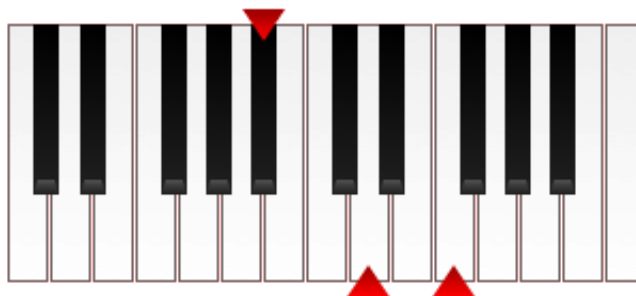
- In this key, the second scale degree is B.



-
- Lower it to B \flat .



- Now, build a major triad. This results in B \flat -D-F.



- Thus, a B \flat major chord is the Neapolitan of A Major.

If this lesson helps you, please **purchase our apps** or **donate**.